

**2011 Environmental Evaluators Networking Forum
June 23-24, Washington D.C.
The Marvin Center, George Washington University**

LOCATION

800 21st St NW (between H and Eye Streets), 3rd floor lobby, Washington D.C.

Metro: Foggy Bottom-GWU, 2301 Eye Street NW (<http://wmata.com/>)

Nearest airports: DCA, IAD, and BWI (www.metwashairports.com)

Additional information on transportation and parking for the Marvin Center is available at <http://gwired.gwu.edu/marvincenter/info/Address/>

LODGING

Hotels within walking distance of the Marvin Center include:

George Washington University Inn
824 New Hampshire Avenue NW, Washington, D.C. 20037
www.gwuinn.com

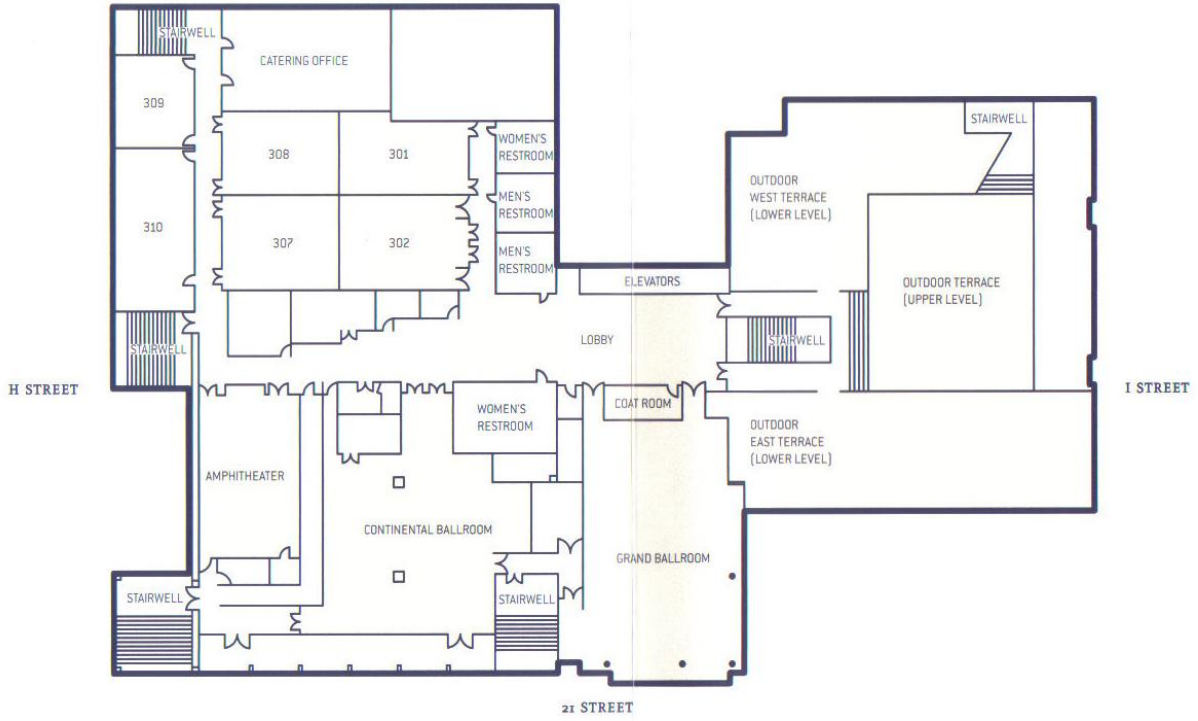
Best Western Georgetown
1121 New Hampshire Avenue NW, Washington, D.C. 20037
<http://book.bestwestern.com/bestwestern/productInfo.do?propertyCode=09014>

Lombardy Hotel
2019 Pennsylvania Avenue NW, Washington, D.C. 20006
www.hotellombardy.com

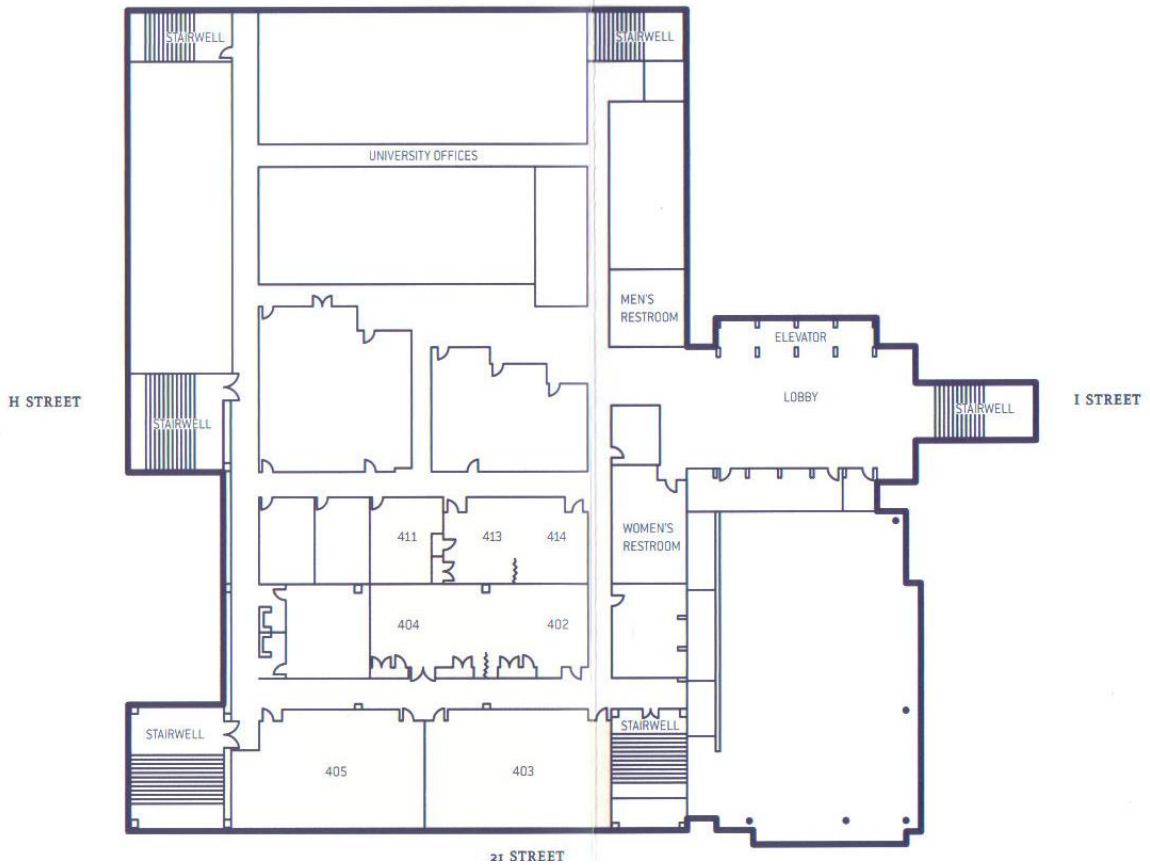
State Plaza Hotel
2117 E Street NW, Washington, D.C. 20037
www.stateplaza.com

MARVIN CENTER FLOOR PLAN

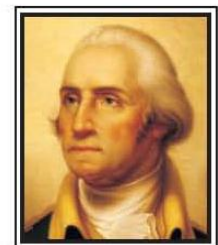
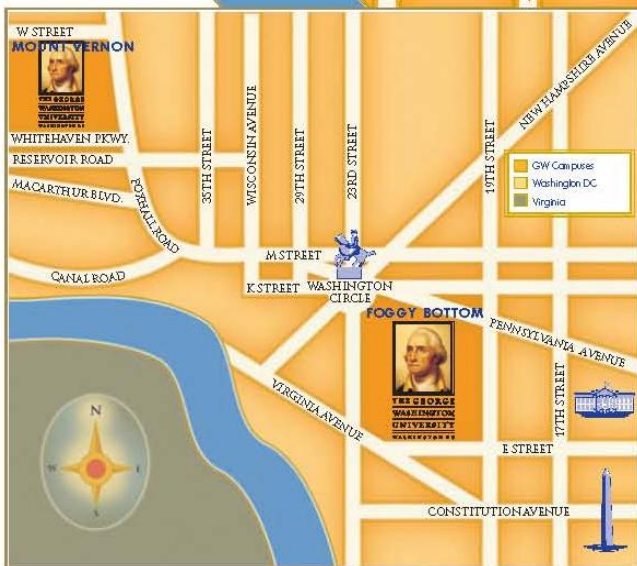
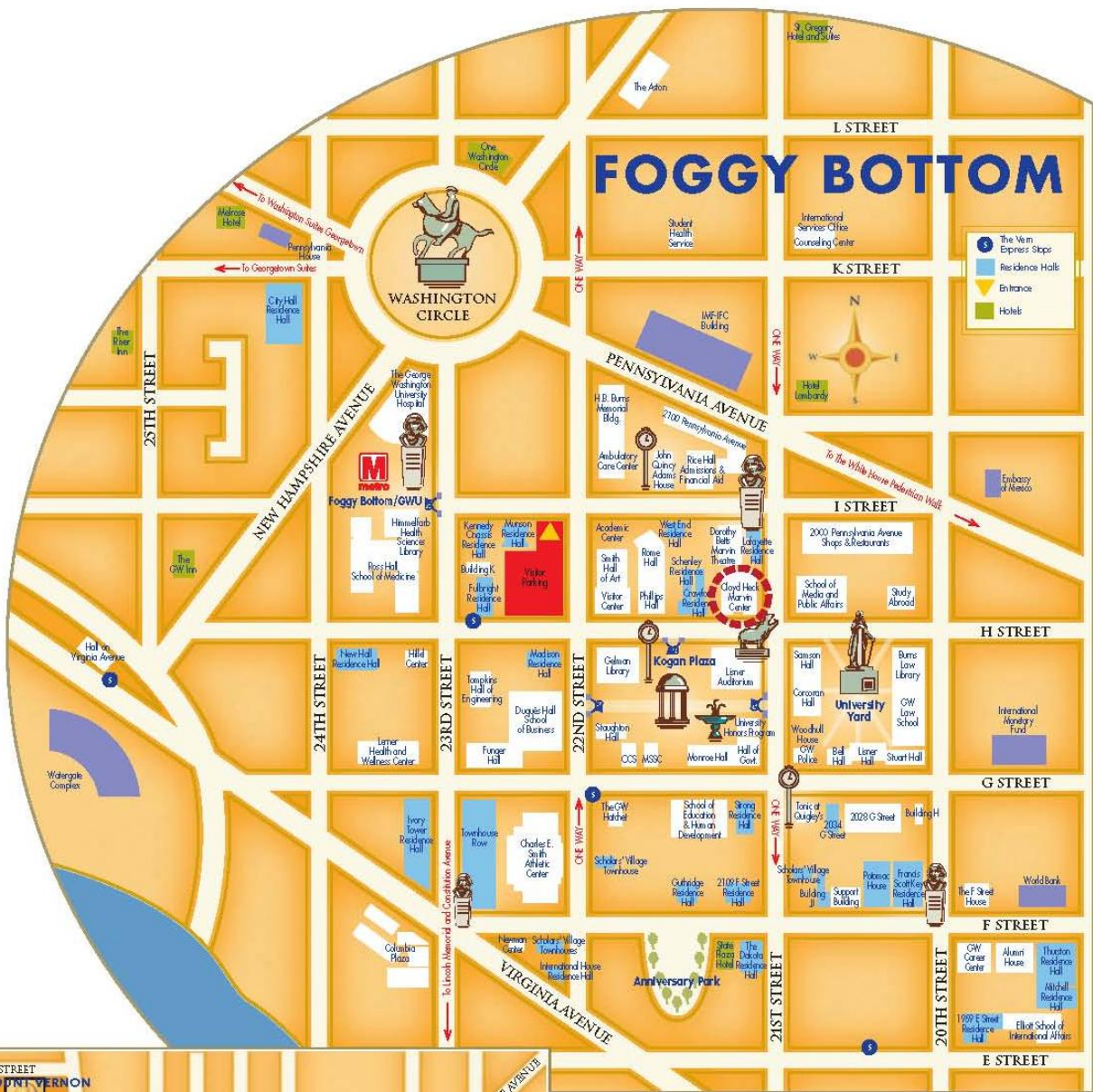
3rd Floor



4th Floor



MAP OF FOGGY BOTTOM, WASHINGTON D.C.



**THE GEORGE
WASHINGTON
UNIVERSITY**
WASHINGTON DC