



Open Standards in Conservation Grantmaking: Presentation at the 2010 EEN Forum

Matthew Birnbaum
Evaluation Officer,
National Fish & Wildlife
Foundation

NFWF's Adoption of Systematic Performance Mgmt (SPM)

- 2007 strategic plan & Board mandate to show results of conservation investments
- Goal: Institutionalize M&E into new initiatives & existing programs
 - Program improvement/
adaptive mgmt
 - Accountability
- Board & leadership support critical for adoption throughout NFWF



NFWF's Application of Systematic Performance Mgmt

Applied at program/initiative level:

- Used to design initiatives from start & retrofit existing programs
- NFWF facilitates participatory planning process with partners (both funders & grantees)
 - The planning process includes setting short-term and long-term results with indicators and objectives.

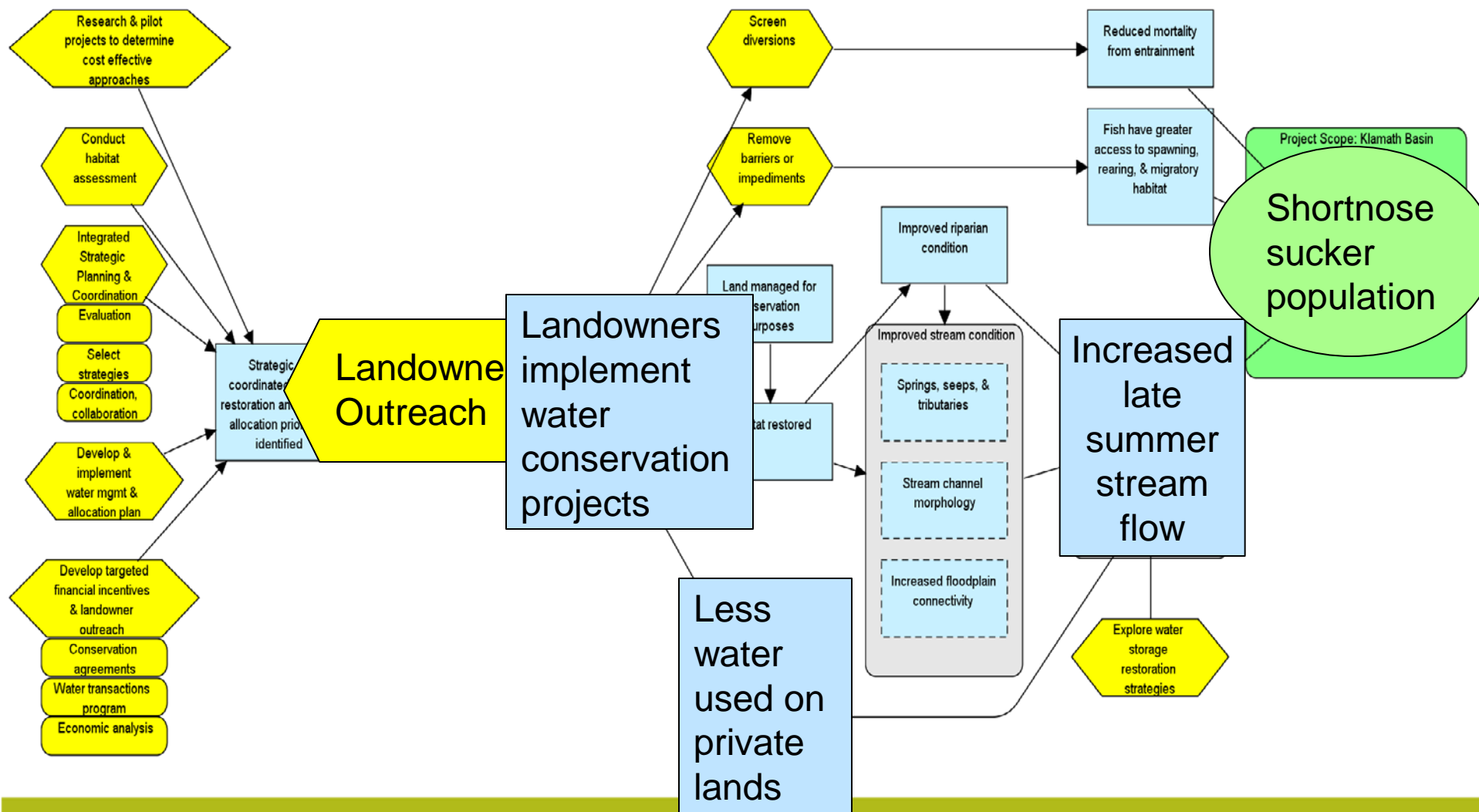


Uses & Benefits

- Monitor impact at program/initiative scale
- Application—Provides clearer guidance to prospective grantees on key program outcomes, indicators, strategies
- Proposal review: Used to assess alignment of grant proposals with overall program/initiative strategy given stated results and objectives.
- “Burden” of applying RBM shifts from grantee → funder (NFWF)



Upper Klamath Basin Initiative Results Chain





Submit Final Programmatic Report (Activities and Outcomes)
Activities and Metrics - Laurie Adams

- Home
- Main
- Project Information
- Activities and Metrics**
- Outcomes and Metrics
- Uploads
- Review and Submit
- FAQ
- Help
- Log Out
- Return to Staff Module

Instructions

Conservation Activities and Metrics

Proposed Activity *

Metric *

<Select Metric>

Value at Grant Completion *

Add

If "Selected above, describe Other Metric here.

Outreach to
landowners in
priority reaches

% of landowners
in priority reaches
agreeing to
participate in
conservation
projects

25%



Submit Final Programmatic Report (Activities and Outcomes)
Outcomes and Metrics - Laurie Adams

- Home
- Main
- Project Information
- Activities and Metrics
- Outcomes and Metrics**
- Uploads
- Review and Submit
- FAQ
- Help
- Log Out
- Return to Staff Modu

Instructions

Conservation Outcomes and Metrics

| Outcome(s) * | Metric * | Baseline Value * | Value at Grant Completion * | Long Term Goal Value * | Year Long Term Value Anticipated * | |
|---|--|----------------------|-----------------------------|------------------------|------------------------------------|------------------------------------|
| <input type="text"/> | <Select Metric> <input type="button" value="v"/> | <input type="text"/> | <input type="text"/> | <input type="text"/> | <input type="text"/> | <input type="button" value="Add"/> |
| <input type="text"/> | | | | | | |
| If "Other" is selected, describe Other Metric here. | | | | | | |

Improved irrigation efficiency on private ranchlands

Cfs of water diverted at project scale

For technic

[Privacy Policy](#) [Terms and Conditions](#)
Powered by [Easygrants](#)

What's On the Horizon?



- Standardize monitoring protocols across project grants
- Create and implement initiative dashboards for documenting interim results for adaptive management and accountability.
- Revisit issue of who (grantees, NFWF or 3rd-party) bears responsibility for M&E at different stages of an initiative/program lifecycle

