



Communities as Engines of Change: Achieving Quality in Environmental Policy Evaluations

Mary Kreger, Dr. PH
Claire Brindis, Dr. PH
Marion Standish, J.D.
Astrid Hendricks, Ph.D.



Overview of Presentation

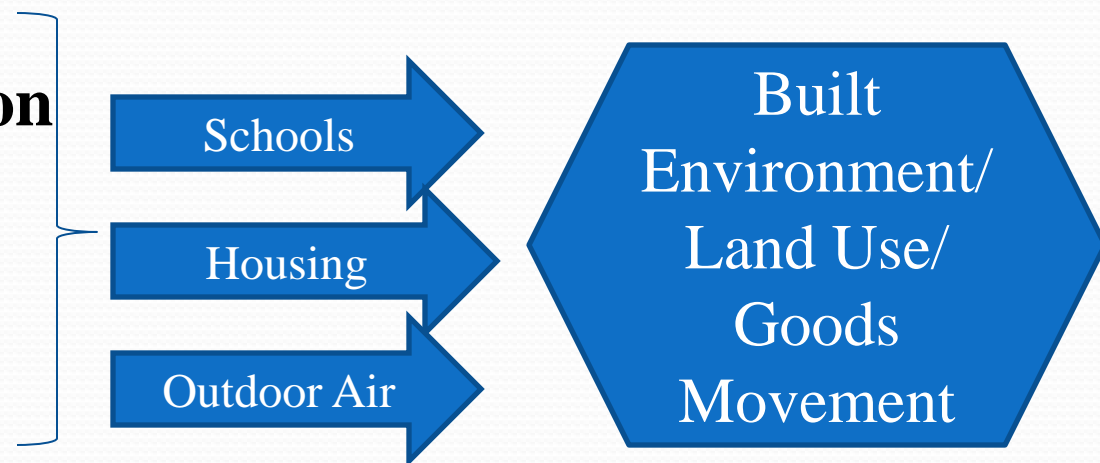
- Evolution of Environmental Policy Initiative to reduce asthma risk factors,
- Supporting Policy and Evaluation,
- Creation of System of Inquiry,
- Evaluation approach to Policy Advocacy in CAFA,
 - Methodologies,
 - Quantitative measures of outcomes and indicators,
 - Qualitative analysis to tell the narrative,
 - Policy maker interviews,
 - Analysis of Coalition approaches to policy advocacy.
- Key Findings.

Evolution of Environmental Policy Initiative

- Moving from grant making focused on diseases to social determinants of health with environmental policy outcomes.
- Second round of funding provided opportunities to sharpen CAFA's local and statewide policy objectives.
- Evaluation findings can empower organizations and stimulate learning and inform decision making for communities and key partners.

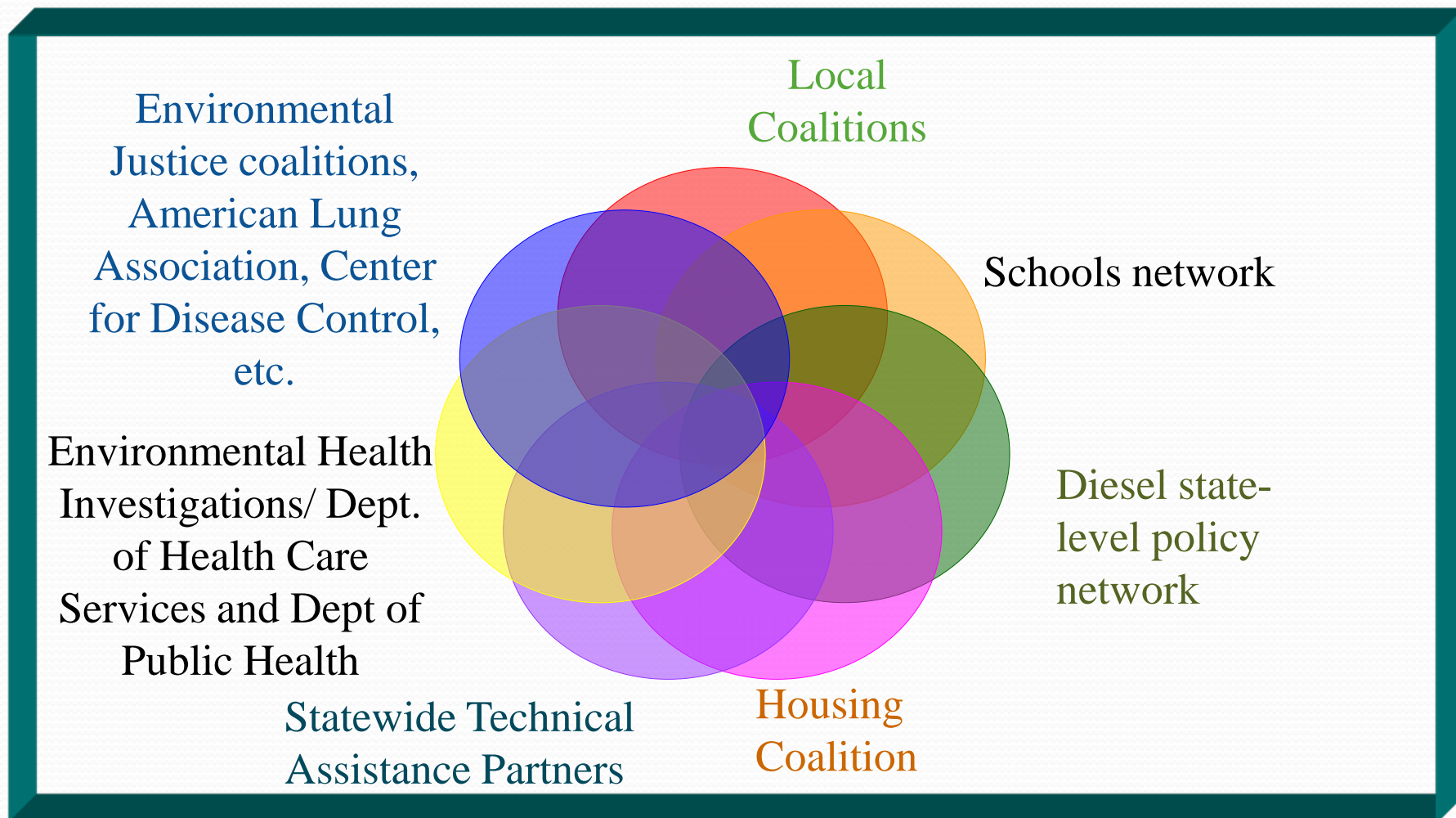
Community Action to Fight Asthma is a network of asthma coalitions in California working to shape local, regional and state policies to reduce the environmental triggers of asthma for school-aged children where they live, learn, and play.

**Environmental Prevention
To Reduce
Health Disparities
and Inequities**



**Systems Change
Understanding Root Causes
Enables Focus on Prevention
and
Designing Systems Change
Endeavors**

Statewide Model of Environmental Partners



Environmental Evaluators Network Meetings

June 7, 2010

Philip R. Lee Institute for Health Policy Studies

An iceberg floating in the ocean. The tip of the iceberg is above the water line, and the much larger base is submerged below. The sky is blue with some clouds. The water is dark blue. The text 'Health Outcomes' is written in orange on the left, with a black arrow pointing to the tip of the iceberg. The text 'Precursor factors at each of the following levels:' is written in yellow on the submerged part of the iceberg. Below this is a list of precursor factors in yellow, each preceded by a bullet point.

Health Outcomes →

Precursor factors at each of the following levels:

- **Individuals, Families, Caregivers**
- **Communities and Neighborhoods**
- **Social and Economic Factors**
- **Physical Environment, Place**
- **Schools**
- **Housing**
- **Public Policy**



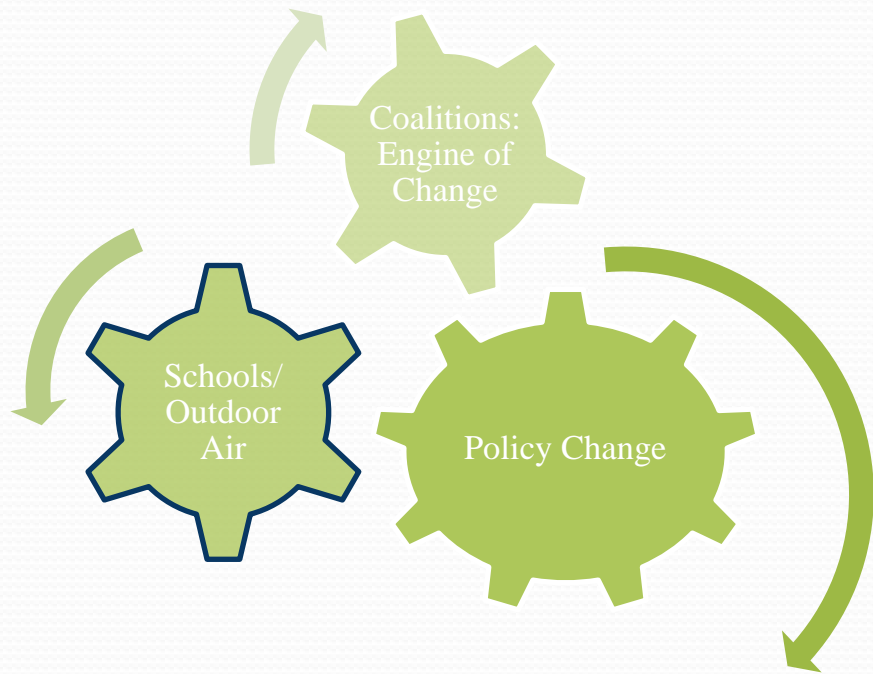
Evaluation Methodology

- Process and Outcome Evaluation using:
 - Structured site visits;
 - Collection and analysis of process data;
 - Technical assistance and feedback regarding the collection of outcome data;
 - Strategic partnership analysis;
 - Policymaker interviews;
 - Contextual analysis of the political and economic environment; and
 - Triangulation across all of these data sources.

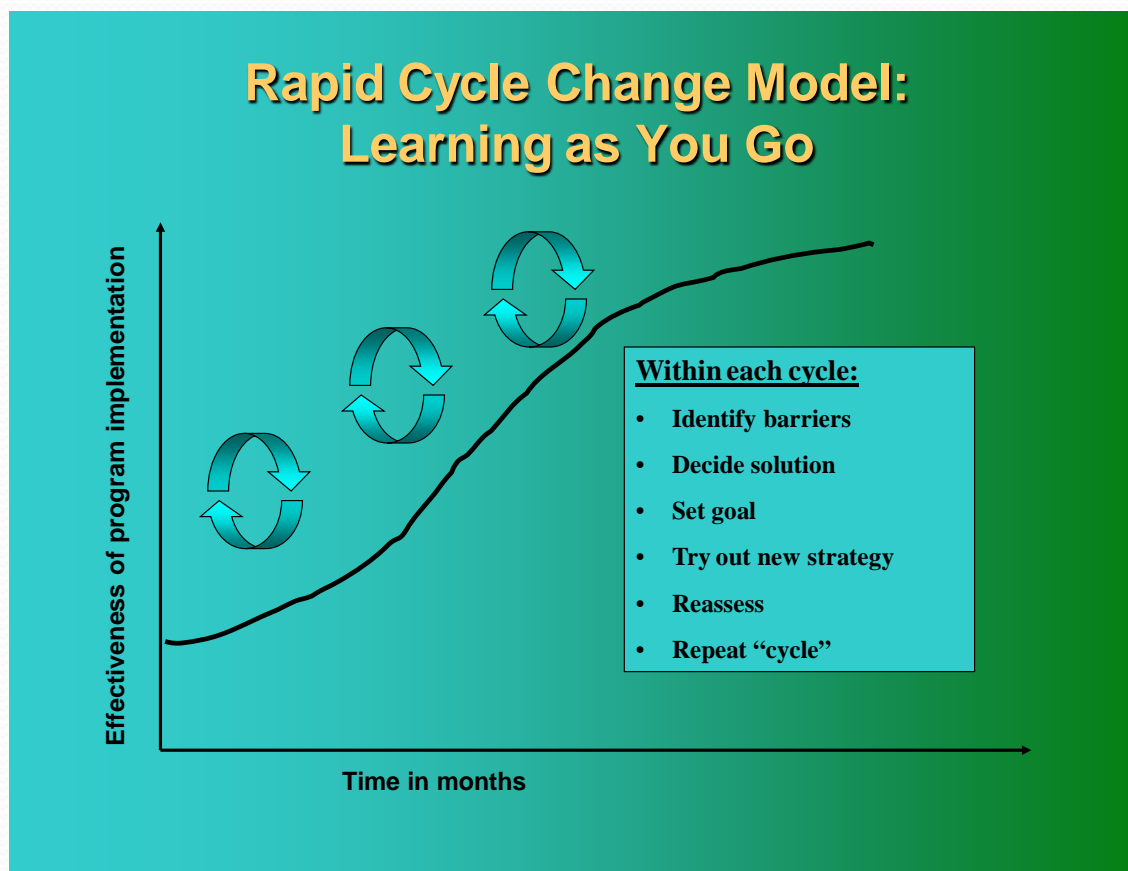
Systems Change Measures

- Changes in awareness and knowledge,
- Changes in organizational behavior,
- Changes in interorganizational partners,
- Changes in policy (big P, little p),
 - Legislation,
 - Regulation,
 - Administration, Procedures, Innovative governance , and
- Changes in policy arenas where change sought.

Coalitions can be an Engine of Social Change: from the grass roots to treetops



Creating a Learning Environment, System of Inquiry





Challenges

▣ Building Credibility

- Using the precautionary principle and data,
- Interpretation and use of environmental, medical, and scientific data.
 - Example: Some Coalitions worked with their local hospitals, health departments, or Air Resources Boards to enhance their credibility.
- Coalition Resources.

Challenges

- Recruiting and Managing diverse collaborative members and strategic partners -- at all levels.
- Matching environmental and social action scale.
 - Diversity of function, expertise, population: requires time, coordination, and trust, and choosing partners for specific issues.
 - Example: Central Valley Coalitions included organic farms and agribusinesses in their planning efforts.
 - Example: Businesses joined the Coalition's efforts in San Diego to keep housing out of an industrial park knowing there would be toxics and pollution too close to the housing units.

Policy Successes: State-Level

- ▣ Diesel reduction strategies:
 - Anti-idling legislation, replacement of older vehicles and modifications on trucks to reduce pollution.
 - School bus idling legislation. Compliance in multiple communities.
- ▣ Port pollution strategies being worked upon:
 - Ports, trucks that pick-up and distribute goods from the ports.
 - Strategies to remove barriers from individual truck drivers by employing them by the port, regulate vehicles.
- ▣ Expansion of citizens' roles in Air District Board.
- ▣ 27 attempted, 15 passed over a three-year period.



Ports/Goods Movement

- The Los Angeles and Long Beach ports are the gateway for approximately 49% of goods that come into the Country.
- The communities that live in the shadow of the port suffer huge pollution problems as do the workers at the ports.
- This issue affects the freeways, inland ports (cargo warehouses that can be acres long), rail, and other transportation systems.
- These ports now have a stated policy in place to reduce their diesel output by 46% over the next year.

Key Findings

- Integrating community members into data collection and media usage opportunities empowers members beyond the scope of their organizations. (Coalition members have transferred these skills into employment opportunities.)
- A policy focus can seem abstract to some individuals or organizations. Meet organizations where they are, assist in moving to next level.
- It may take several iterations to increase awareness so that issues are prioritized.
- Training of community members in policy work is ongoing due to the above processes.

With special gratitude to
The California Endowment and
all participants in the
CAFA Initiative.

Contact Information:

Mary Kreger, Dr. PH

Senior Researcher

Philip R. Lee Institute for Health Policy Studies

University of California, San Francisco

Telephone: 415-502-4544

Email: mary.kreger@ucsf.edu