

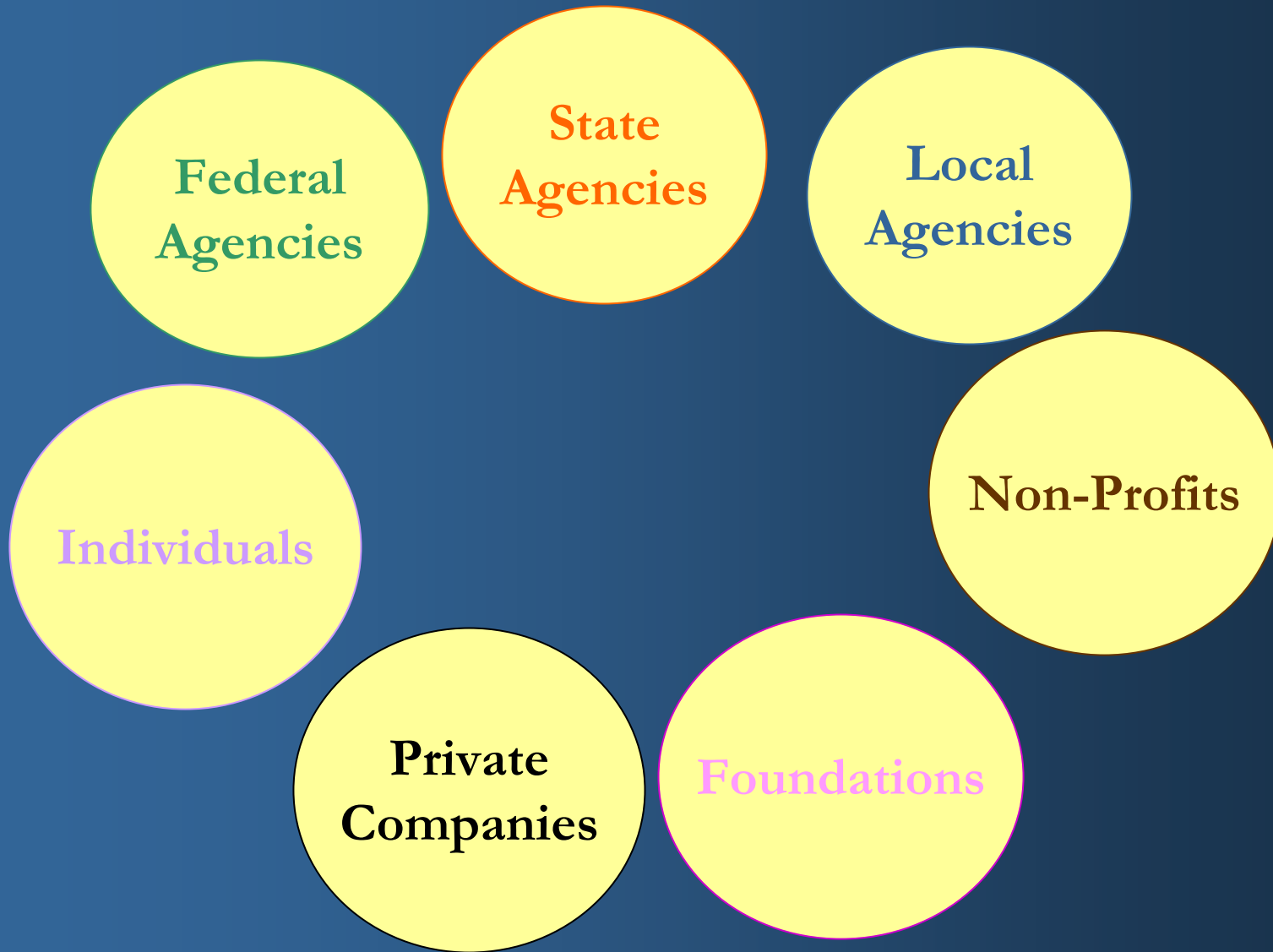


# The Conservation Registry

Gina LaRocco

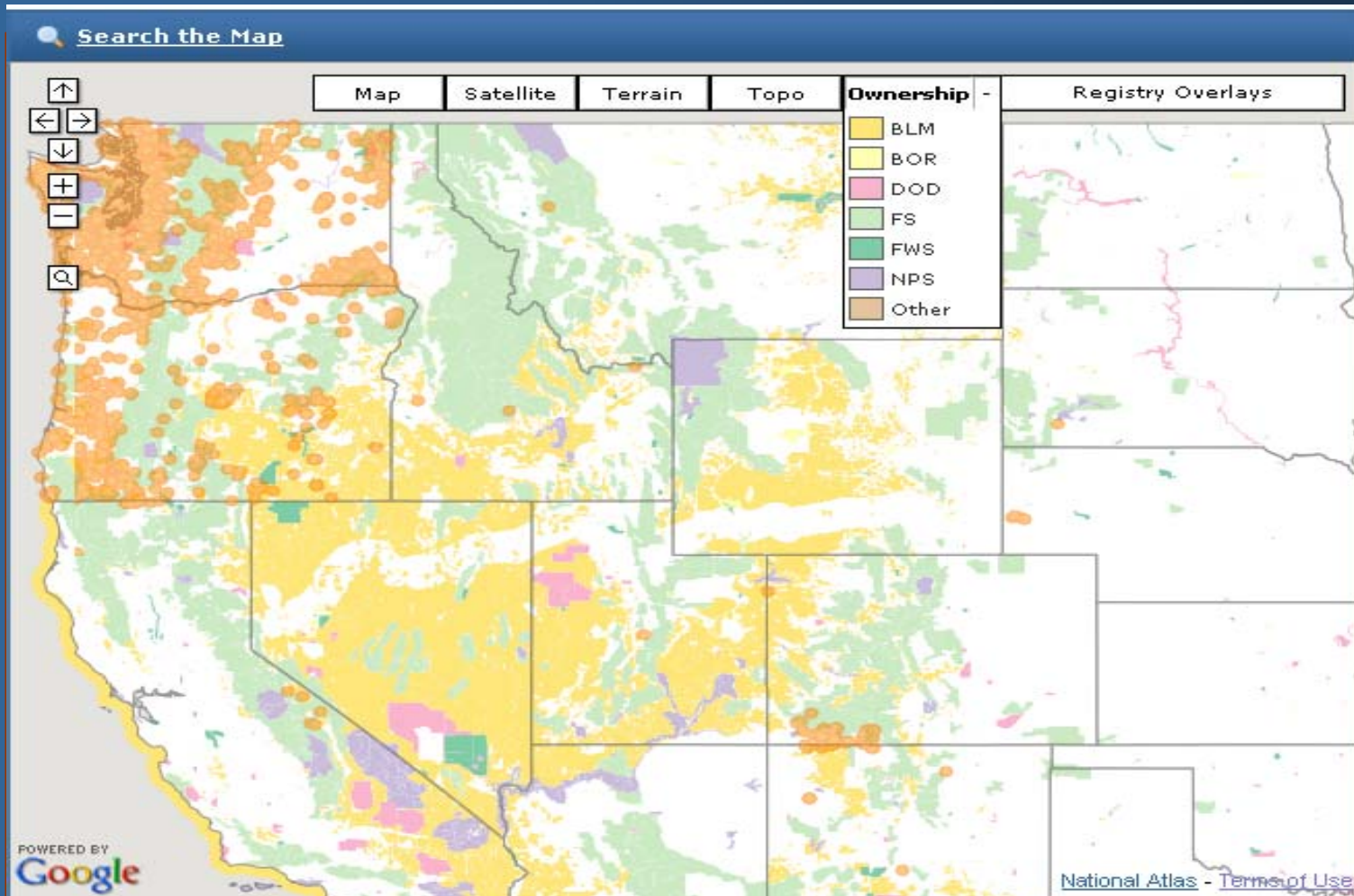
Defenders of Wildlife

# We have many people doing on-the-ground restoration and conservation work....

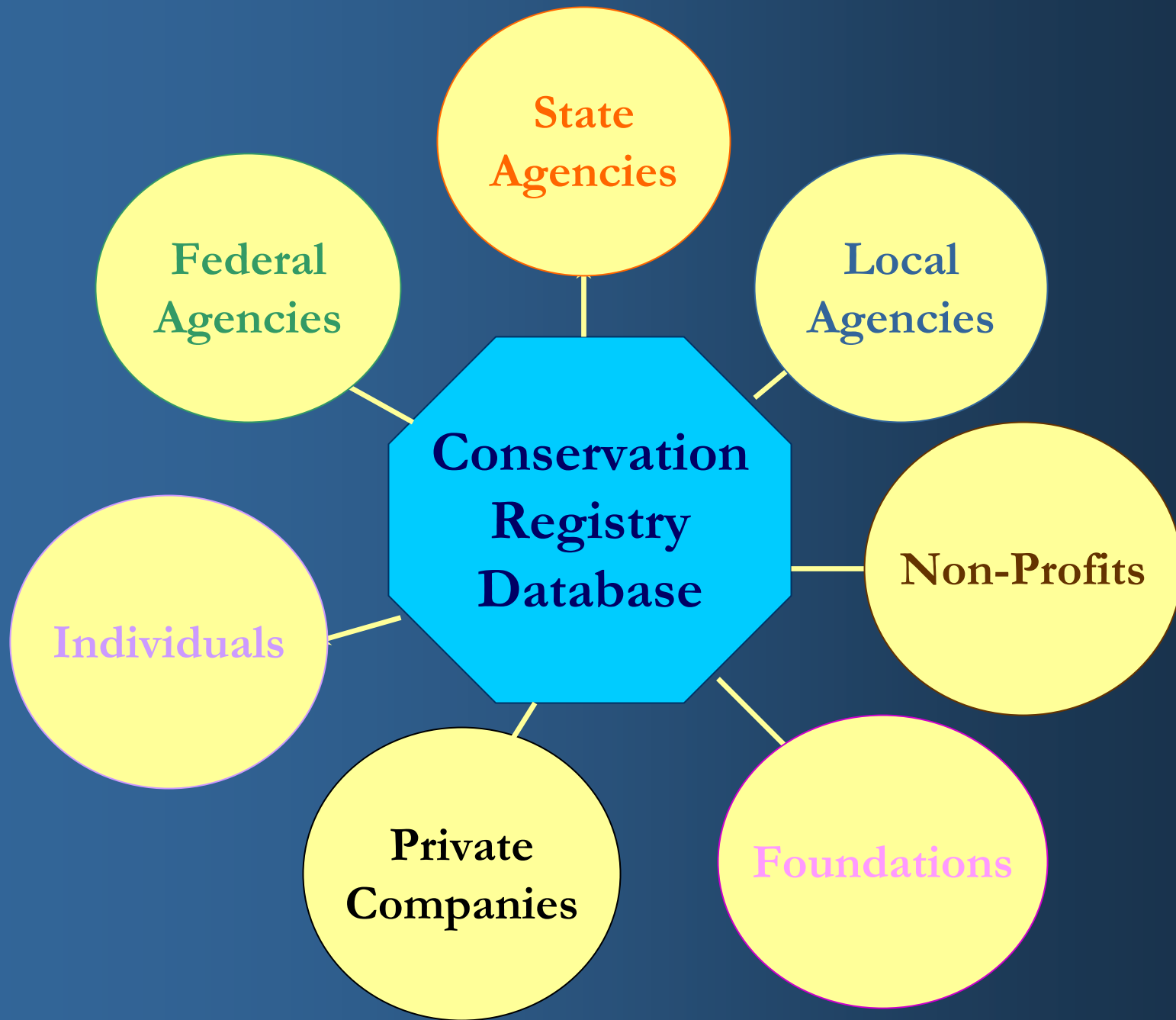




and we have maps that show where  
our resources are...

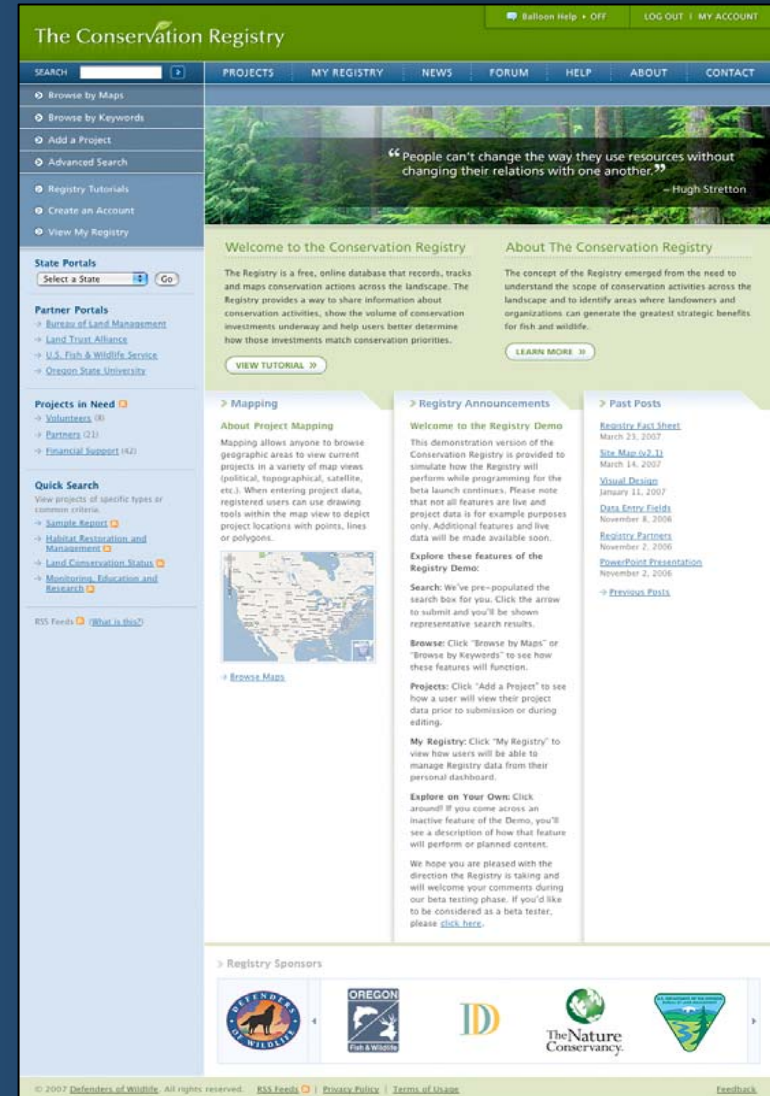


...but we don't know where we are working in relation to one another or whether we are doing projects within mapped priorities.



# What is the Registry?

- National online, centralized database
- Tracks and maps conservation projects across the landscape
- Synthesis and project management tool



# Conservation Projects:

- 3 categories:
  - Habitat Restoration and Management
  - Enhanced Conservation Status
  - Monitoring, Education and Research
- Captures proposed, in progress, completed and ongoing management projects





# What can it do?

- **State wildlife agencies** – track implementation of wildlife action plans
- **Federal resource agencies** – improve coordination with state, local and private partners
- **Landowners** – help promote on-the-ground efforts
- **Policy makers and investors** – help in understanding where public and private money is being spent
- **Conservation organizations** – find opportunities for collaboration



# Who is supporting development?

- Benjamin Hammett, PhD
- Bonneville Power Administration
- Bureau of Land Management (Oregon)
- Clean Water Services
- Defenders of Wildlife
- Doris Duke Charitable Foundation
- Idaho Department of Fish & Game
- Metro Regional Government
- M.J. Murdock Charitable Trust
- John Miller, Wildwood / Mahonia, Inc.
- National Fish and Wildlife Foundation
- Nature Serve
- Oregon Department of Agriculture
- Oregon Department of Environmental Quality
- Oregon Department of Fish & Wildlife
- Oregon Department of Forestry
- Oregon Department of Geology and Mineral Industries
- Oregon Department of Parks and Recreation
- Oregon Department of State Lands
- Oregon Department of Transportation
- Oregon Water Resources Department
- Oregon Forest Resources Institute
- Oregon Habitat Joint Venture
- Oregon Institute for Natural Resources
- Oregon Trout/Freshwater Trust
- Oregon Watershed Enhancement Board
- Oregon Zoo
- Pacific Coast Joint Venture
- Pinchot Institute for Conservation
- Port of Portland
- Samuel S. Johnson Foundation
- The Nature Conservancy (Oregon)
- U.S.D.A. Forest Service
- U.S.D.A. Forest Service Pacific NW Research Station
- U.S. Fish and Wildlife Service
- U.S. Geological Survey
- University of Idaho
- Washington Biodiversity Council
- Washington Department of Fish & Wildlife
- Washington State Recreation and Conservation Office
- Wessinger Foundation
- Wildlands, Inc.
- The Wildlife Conservation Society

Web site:

[www.conservationregistry.org](http://www.conservationregistry.org)

- Anyone can search the database
- Create account to enter and edit projects





[SEARCH](#)
[VIEW PROJECTS](#)
[MY REGISTRY](#)
[NEWS](#)
[ABOUT](#)
[CONTACT](#)
[Browse by Maps](#)
[Browse by Keywords](#)
[Quick Searches](#)
[Advanced Search](#)
[Add a Project](#)
[View My Registry](#)
[Support the Registry](#)

## State Portals

 [Go](#)

## Projects in Need

- [Volunteers](#) (0)
- [Approval](#) (0)
- [Equipment](#) (0)
- [Funding](#) (0)
- [Permits](#) (0)
- [Technical Support](#) (0)
- [Planning Assistance](#) (0)

## Quick Searches

View projects of specific types or common criteria.

[View Quick Searches](#)

## Quick Reports

- [Idaho](#)
- [Oregon](#)
- [Washington](#)



## Welcome to the Conservation Registry

The Conservation Registry is a smart, accessible database and mapping system that allows users to enter, search, map and track interesting conservation projects. The registry gathers data from multiple sources, ranging from small organizations and landowners to federal resource agencies, non-profit organizations, tribes and foundations. The purpose of the registry is to help users understand the context, distribution, and effectiveness of our collective efforts to protect and restore ecosystems.

## About The Conservation Registry

The concept of the registry emerged from our need to understand the scope of conservation activities across the landscape and to identify areas where landowners and organizations can generate the greatest strategic benefits for fish and wildlife.

[LEARN MORE »](#)
[VIEW FAQs »](#)

## Registry Tools

### Search

You can search for conservation projects using the Search box at the top of the site or [Advanced Search](#) for more detailed queries. The [Quick Search](#) has a number of pre-defined searches that you can edit and save to the [My Registry](#) section.

### Keywords

Keywords allow users to describe their projects informally. You can [browse projects by keywords](#) to see projects that share keywords and have similar attributes.

### Quick Reports

Quick Reports provide you with a summary of projects within a state. You'll see project distribution by county as well as top action types, species, habitats, and more.

### Add a Project

If you have just a few conservation projects or no system for managing projects, [create a registry account](#) and use [Add a Project](#) to enter project data manually, draw project sites right on the map, and store your projects in [My Registry](#).

## Mapping Tool

Using a modified version of Google Maps, anyone can [view conservation projects](#) anywhere in the United States. Project locations are shown on the map with pop-up balloons that describe the project. Custom map overlays show priority areas, ecoregions, watersheds and more.

Users with accounts can add their projects directly to the map using drawing tools that show their sites as points, lines or polygons using the [Add a Project](#) feature.


[Browse by Maps »](#)
[Browser-Compatible for Mapping Tool](#)

## Registry News

### Version 1.0 Public Release

June 23, 2008

Version 1.0 of the Conservation Registry has been released for use in Oregon, Washington and Idaho, with national expansion to follow closely behind. The purpose of this initial Pacific Northwest release is to ensure that the registry meets users' expectations and to refine any features before a broader release to other states.

[Read more...](#)

### Featured Project Data

June 20, 2008

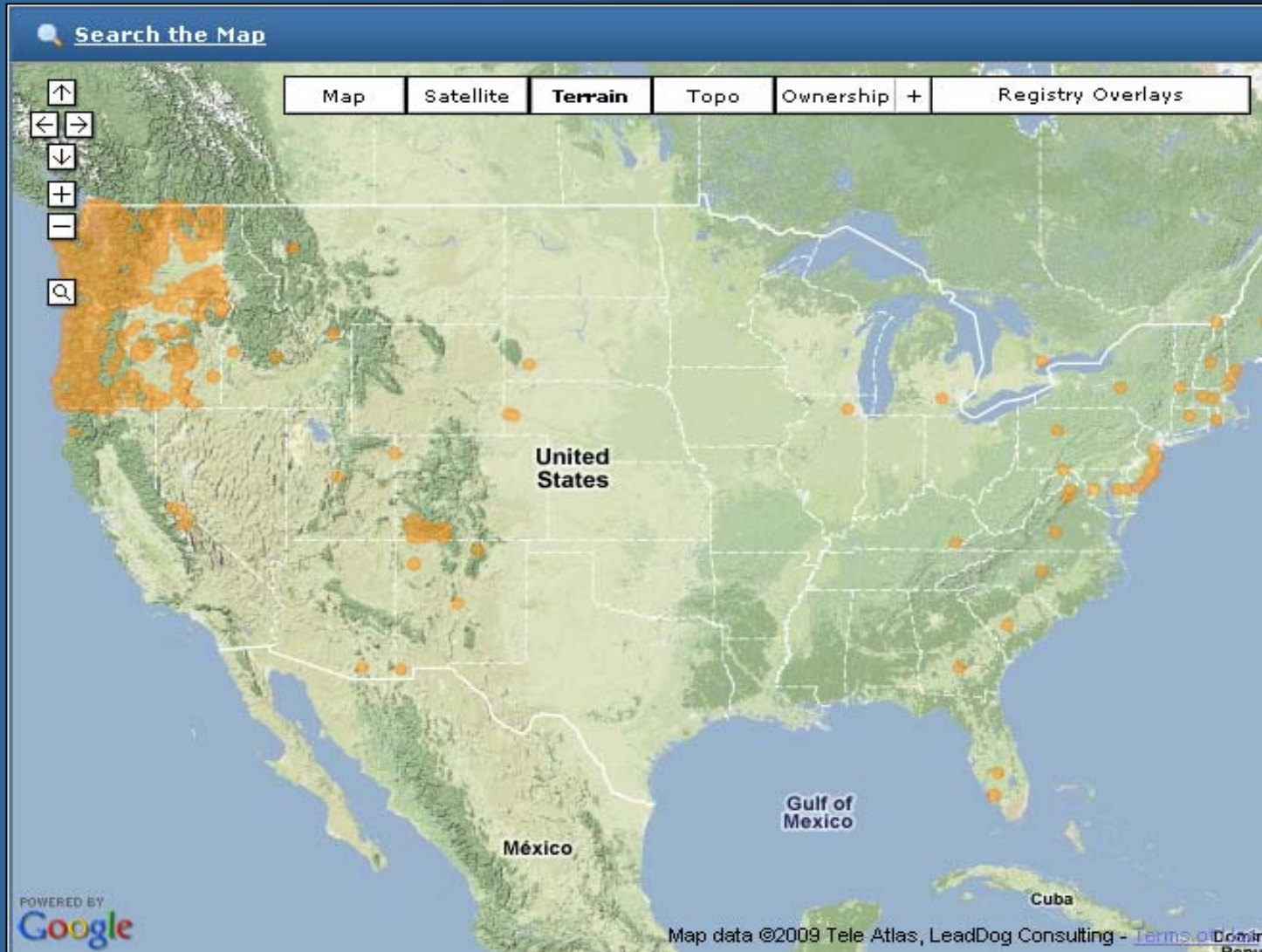
We're pleased to announce that our first data imports have been successful! We recently added conservation easement and land acquisition project data from the Oregon and Washington offices of The Nature Conservancy, as well as aquatic restoration project data from The Bureau of Land Management.

[Read more...](#)
[View All Registry News »](#)

Click the logos below to visit the Registry Partners

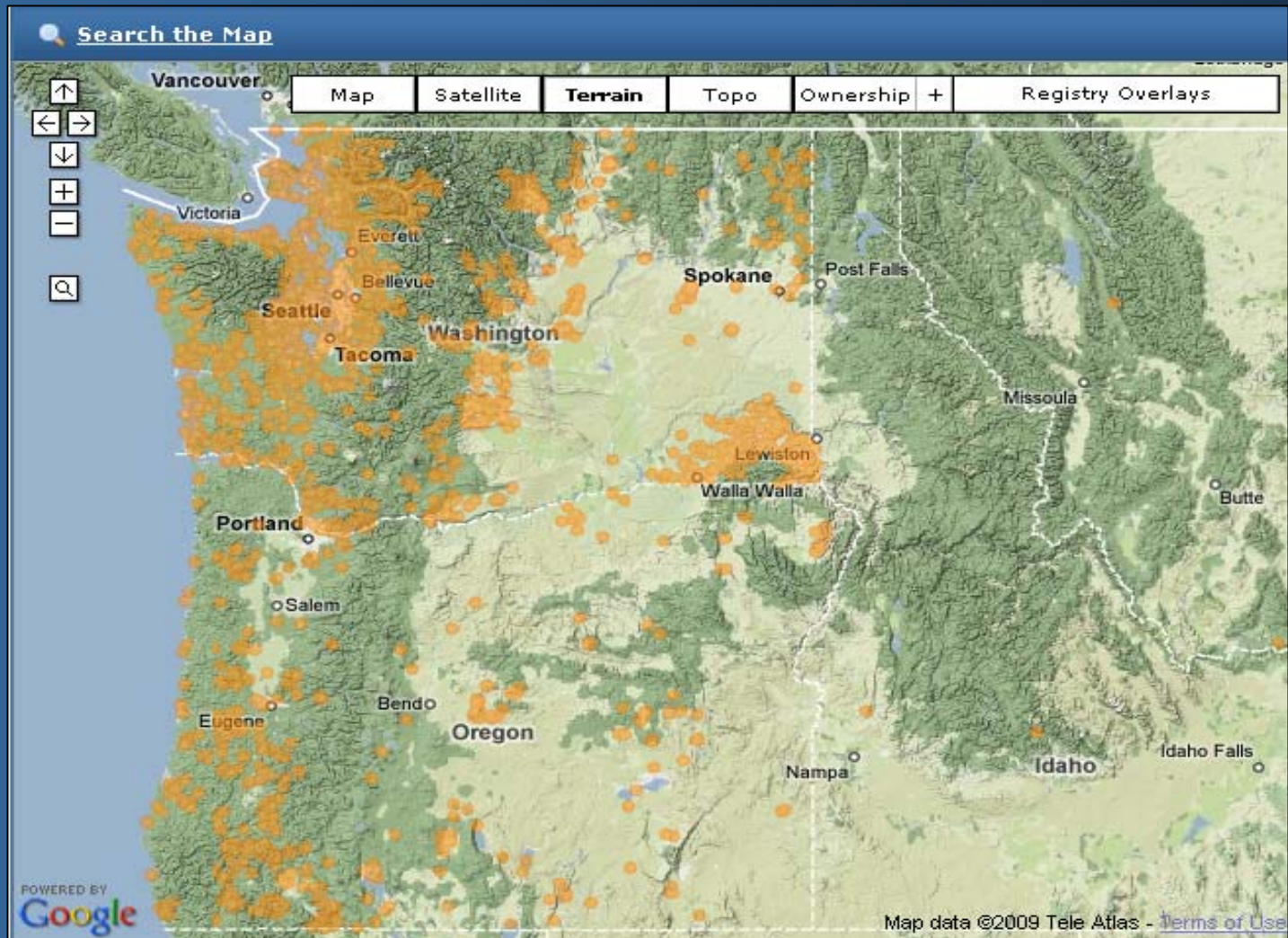


# Browse by Maps





# Browse by Maps: Zoom



# Browse by Maps: Projects

**Search the Map**

Map | Satellite | **Terrain** | Topo | Ownership | + | Registry Overlays

**Rogue River Stakeholders Project** [X]

**Site:** Rogue River Stakeholders Project  
**Location:** Jackson County, OR  
**Organization:** DOGAMI- Mineral Land Regulation and Reclamation Program  
**Contact:** E. Frank Schnitzer

This project on the Rogue River near Lower Table Rock in Jackson County involved a consortium of landowners; private industry; sport and conservation groups; and local, sta...

[View Detail Page](#)

Map data ©2009 Tele Atlas - [Terms of Use](#)

The screenshot shows a Google Maps interface with a terrain view of Jackson County, Oregon. A pop-up window for the 'Rogue River Stakeholders Project' is displayed, providing details about the site, location, organization, and contact information. The map shows the Rogue River and surrounding areas, including towns like Grants Pass, Gold Hill, and Jacksonville. A search bar at the top left allows for map navigation, and a toolbar at the top right offers different map styles and overlays.



# Rogue River Restoration Project

Updated: January 27, 2009

[Back](#)

[Log in](#) to save this project in My Registry

## Project Summary

This project on the Rogue River near Lower Table Rock in Jackson County involved a consortium of landowners; private industry; sport and conservation groups; and local, state, and federal agencies....

**Location:** Jackson County, OR

**Project size:** 0.0 acres



## Full Project Description

This project on the Rogue River near Lower Table Rock in Jackson County involved a consortium of landowners; private industry; sport and conservation groups; and local, state, and federal agencies. The project consisted of three phases. Landowners and agencies funded phase one. Phases two and three were partially funded with grants from OWEB. The project was developed to protect high-value fish habitat along a three-mile reach impacted by the 1997 New Year's Day flood when an ODOT gravel pond was captured. This same reach has been subjected to both in-stream and floodplain mining over the last five decades. Stakeholders developed a river and floodplain management plan and obtained funding and permits to work in the river and on the floodplain. Work included placement of engineered structures, gravel excavation in an abandoned channel, berm and bank construction, and revegetation. The management plan was designed to reconnect the river to the channel migration zone and the floodplain and to reopen abandoned channels. The data collection and project design addressed the whole system and the most significant variables which have, and will in the future, influenced the river reach.

## Goals and Targets

### Primary motivations:

- Public Benefit
- Mitigation
- Conservation Mission

### Primary goals:

- Engage local community and develop project support.
- Design and construct the project to mitigate the potential for future pit capture of adjacent mine ponds.
- Design and construct the project to pass a 100-year event without causing resource damage or impacts to adjacent properties.
- Re-open the pre-1997 channel for flood relief and fish access.
- Remove non-natives and establish riparian native vegetation.
- Initial project goal established when stakeholders began meeting in July 2000: Develop a feasible and sustainable river and floodplain management plan that identifies natural resource protection, rehabilitation, and mitigation issues designed to improve existing conditions. This will involve development of integrated reclamation and riparian management plans. Identify available resources to accomplish river and floodplain management objectives. Monitor plan implementation.

### Consistent with plans:

- Habitat Conservation Plan
- Watershed Plan
- Local Land Use Plan

### Targeted habitats:

- Aquatic
  - Rivers and Streams
- Wetlands and Riparian Habitats
  - Lowland Riparian Forests and Shrublands
  - Interior Lowland and Foothill Riparian Woodland and Shrubland

## Organization

DOGAMI- Mineral Land Regulation and Reclamation Program (State Government)

## Primary Contact

E. Frank Schnitzer (Lead Reclamationist)  
[Send email](#)

## Partners

Robert Mace  
Keith Emerson  
Paul Kay  
Mike Mattson  
Tom White and Judge Ray White  
John Vial  
Vern Gebhard  
Bill Leavens  
Frank Bird  
Bill Rittenhouse  
Mike Ayers  
Bose Marie Davis  
Carren Borgas

## Project Documents

- [Project Aerial](#)
- [Pre-project geom...](#)
- [Pre-project data ...](#)
- [Predicted Channel...](#)
- [1936 Aerial](#)
- [1962 Aerial](#)
- [Landowners](#)
  - [Project Power Poi...](#)
  - [Project Power Poi...](#)
- [Phase 2 Project C...](#)
- [SME Paper 06-050 ...](#)
- [Phase 3 Project C...](#)
- [Managment Plan- 2003](#)

## Project Photos



## Project Links

[www.oregongeo.org/sub/news8events/archives/MLRRRogueOct2003.htm](#)

## Project Keywords

Click to find similar projects.

- [Fisheries protection](#)
- [Pit capture](#)
- [Floodplain gravel mining](#)
- [Riparian restoration](#)

## Targeted species:

- Coho Salmon - Southern Oregon/northern California Coast  
*Oncorhynchus kisutch* pop. 2
- Rainbow Trout or Steelhead *Oncorhynchus mykiss*
- Cutthroat Trout *Oncorhynchus clarkii*
- Chinook Salmon - Southern Oregon/Northern California Coast Fall Run *Oncorhynchus tshawytscha* pop. 26
- Poison Hemlock *Conium maculatum*
- Himalayan Blackberry *Rubus armeniacus*
- Bald Eagle *Haliaeetus leucocephalus*

## Actions

Action	Status	Start Date	End Date
Plant native riparian vegetation	Ongoing Management	2002	2006
Reconstruct stream meander or side channel	Completed	2002	2003
Stabilize streambank	Completed	2002	2003
Control invasive plants	Ongoing Management	2002	2010
Manage sediment inputs	Completed	2002	2004

## Assistance

Direct Funding	
Grant ()	<a href="#">Show/Hide details</a>
Grant ()	<a href="#">Show/Hide details</a>

Technical Assistance	
Project Engineering and Design	<a href="#">Show/Hide details</a>
Planning	<a href="#">Show/Hide details</a>
Monitoring	<a href="#">Show/Hide details</a>
Other	<a href="#">Show/Hide details</a>
Other	<a href="#">Show/Hide details</a>

In-Kind Contribution	
Various-Phase 2	<a href="#">Show/Hide details</a>
DOGAMI-Phase 2	<a href="#">Show/Hide details</a>
Lidstone and Associates-Phase 2	<a href="#">Show/Hide details</a>
Rogue Aggregates-Phase 2	<a href="#">Show/Hide details</a>
Rogue Aggregates- Phase 3	<a href="#">Show/Hide details</a>
DOGAMI-Phase 3	<a href="#">Show/Hide details</a>
Lidstone and Associates-Phase 3	<a href="#">Show/Hide details</a>
Various-Phase 3	<a href="#">Show/Hide details</a>
ODOT-Phase 3	<a href="#">Show/Hide details</a>

## Outcomes

Is the success of this projects actions being monitored? Yes

### Please describe your monitoring activity.

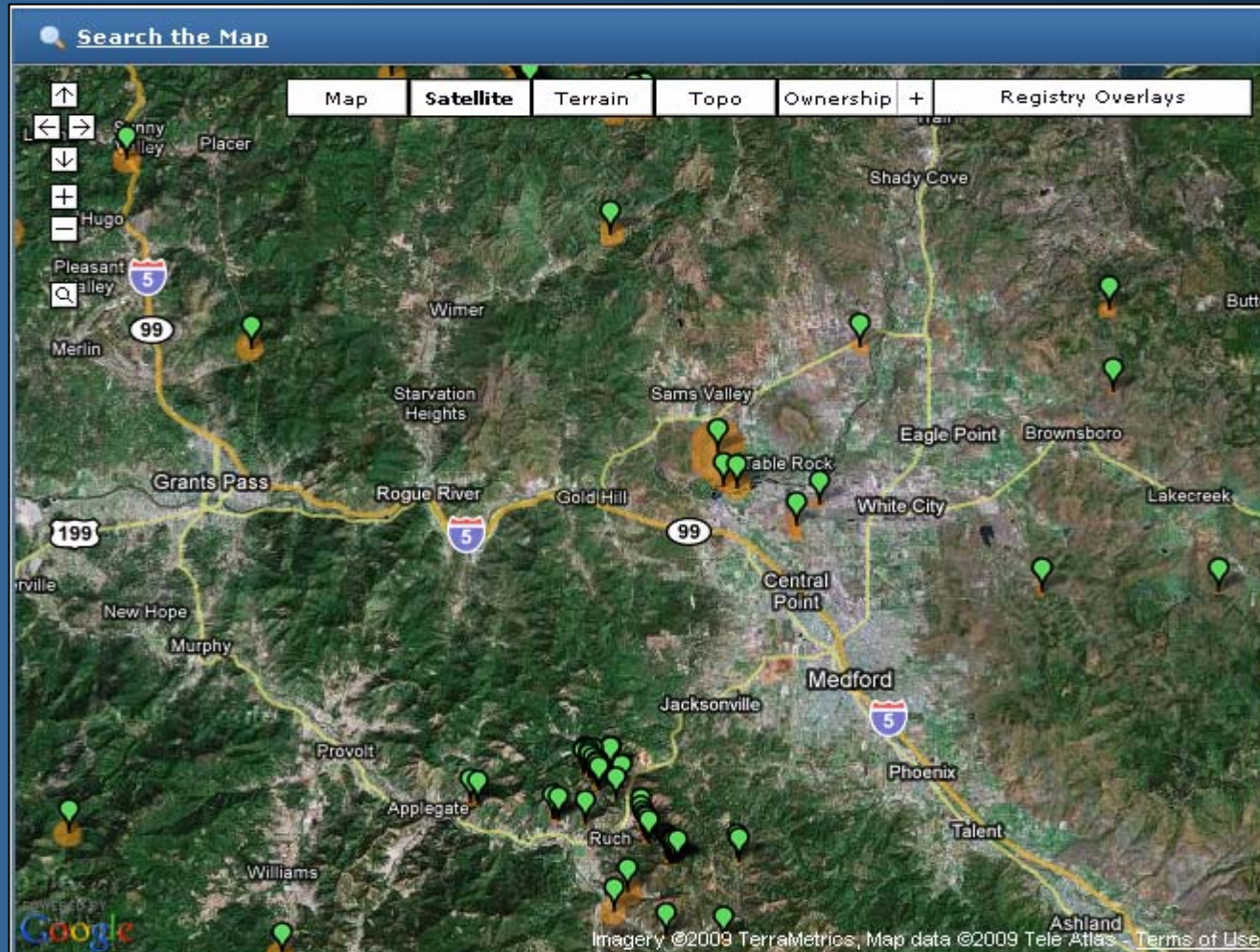
Plant establishment • Channel bank stability • Stability of off-channel weir, bendway weirs, and stream barbs • Fine and coarse sediment deposition in pit capture reach • Re-survey river channel sections at years 5 and 10 or whenever river discharge exceeds a 10-year flow event

### What lessons have been learned and/or what suggestions do you have for similar activities?

On-the-ground work may take more time and resources than anticipated. Initially, plant establishment and maintenance was completed using volunteers. All volunteers have different skill levels so experienced planters are needed to help others in appropriate ratios. Over time, fewer volunteers showed up and the work was left to a few: ODFW, DOGAMI, and Rogue Aggregate personnel. Due to the size of the planting effort, it became a bit overwhelming. Since 2005, most of the plant maintenance activity (weed eaters) was completed with the assistance of the Jackson County Community Justice work crew. If adequately monitored, community justice work crews can really provide help. In 2006, all river channel sections were re-surveyed and bathymetric data was collected for the captured pond. The data and a discussion about the current status of the monitoring can be found in the Phase 3 project completion report.

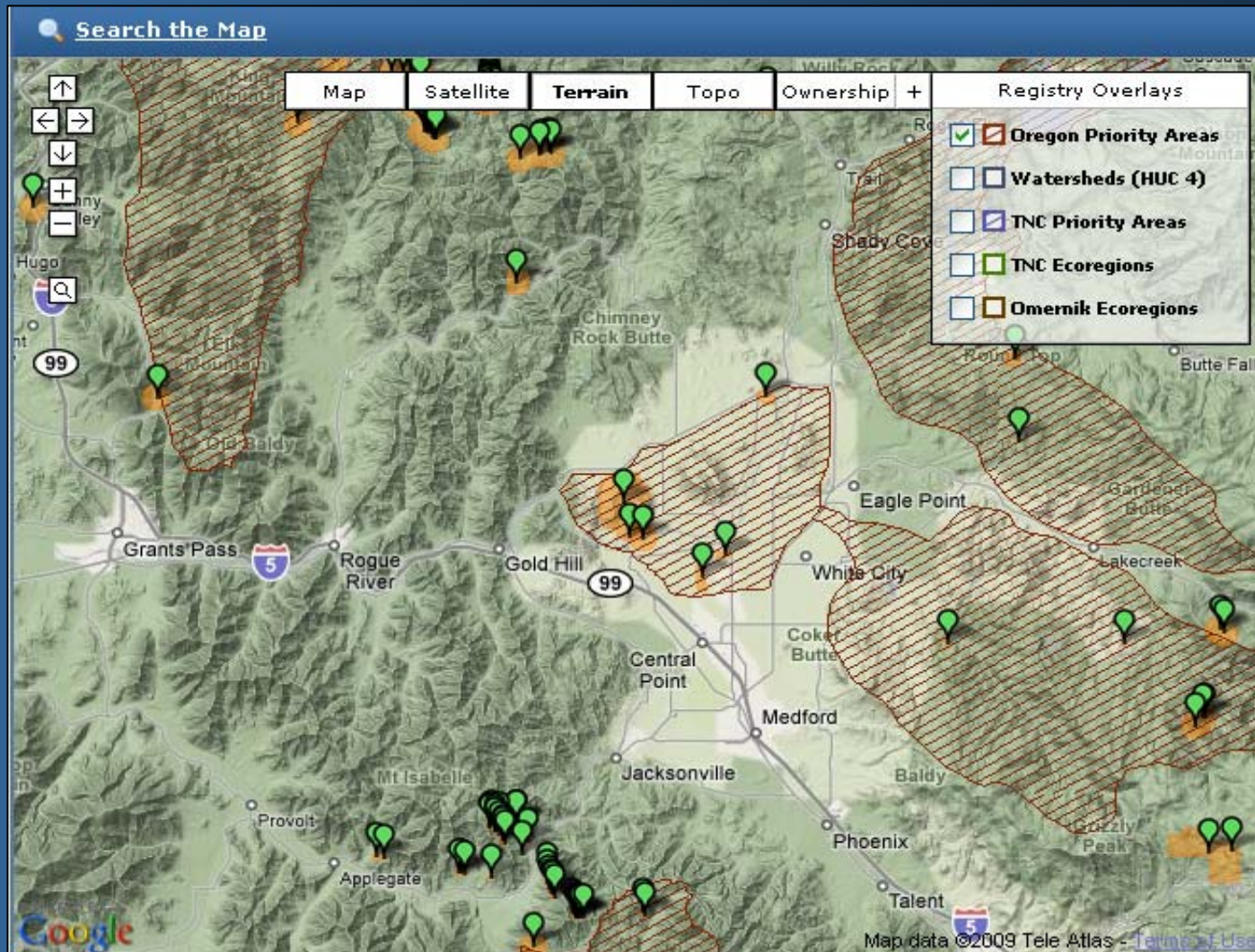
# Project Detail

# Browse by Maps: Map Layers





# Projects in Relation to Priorities

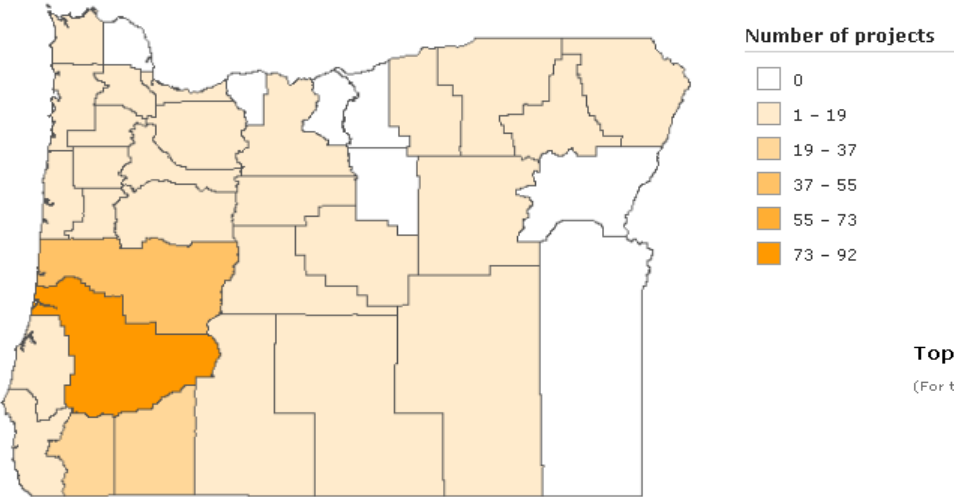


# Quick Report for Oregon

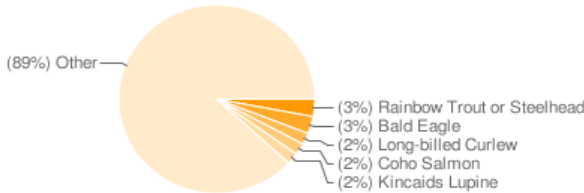
Query Parameters: All Projects  
Total Number of Projects: 311

## Relative number of projects per county

(Derived using an Equal Interval classification scheme)

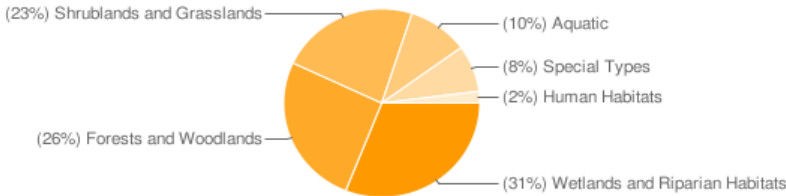


## Top 5 species targeted for conservation



## Top habitat types targeted for conservation

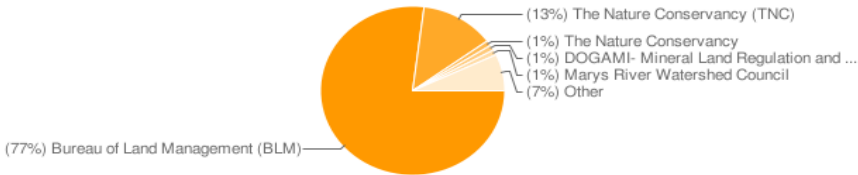
(For the 68 projects which entered a target habitat.)



# Reports: Data summary for state

## Top 5 managing organizations

(For the 311 projects which reported a managing organization)



# Lessons and Challenges:

- Balance between simplicity and precision
- Standardizing data from multiple sources
- Data in



# Contact Information:



**Gina LaRocco**

**Defenders of Wildlife**

1880 Willamette Falls Drive, #200

West Linn, Oregon 97068

503-697-3222

E-mail:

[GLarocco@defenders.org](mailto:GLarocco@defenders.org)