



Chesapeake Bay Stewardship Fund

Accelerating local implementation of the most innovative, sustainable and cost-effective strategies to restore and protect water quality and vital habitats within the Chesapeake Bay watershed.

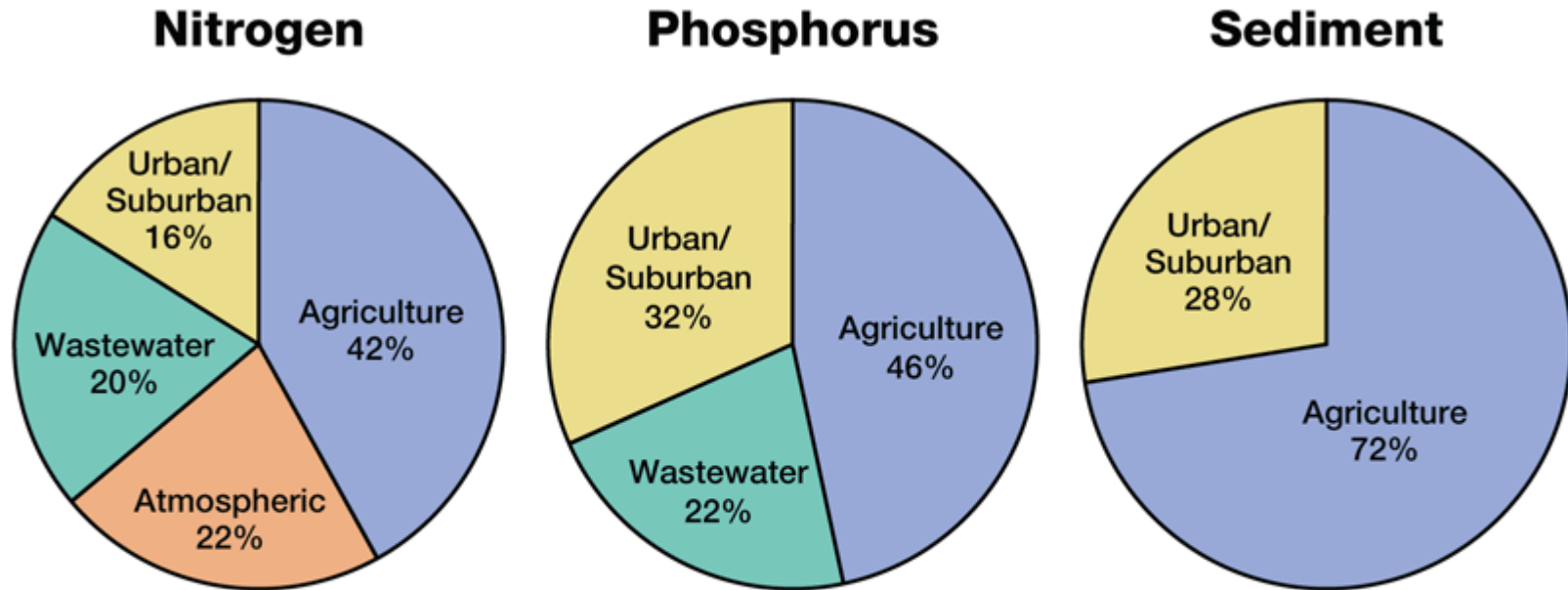
Translating Evaluation Findings into Program Improvements **EEN Forum, June 8, 2009**





Main Culprit: Nutrient & Sediment Pollution

Relative Responsibility for Loads to the Bay (2007)



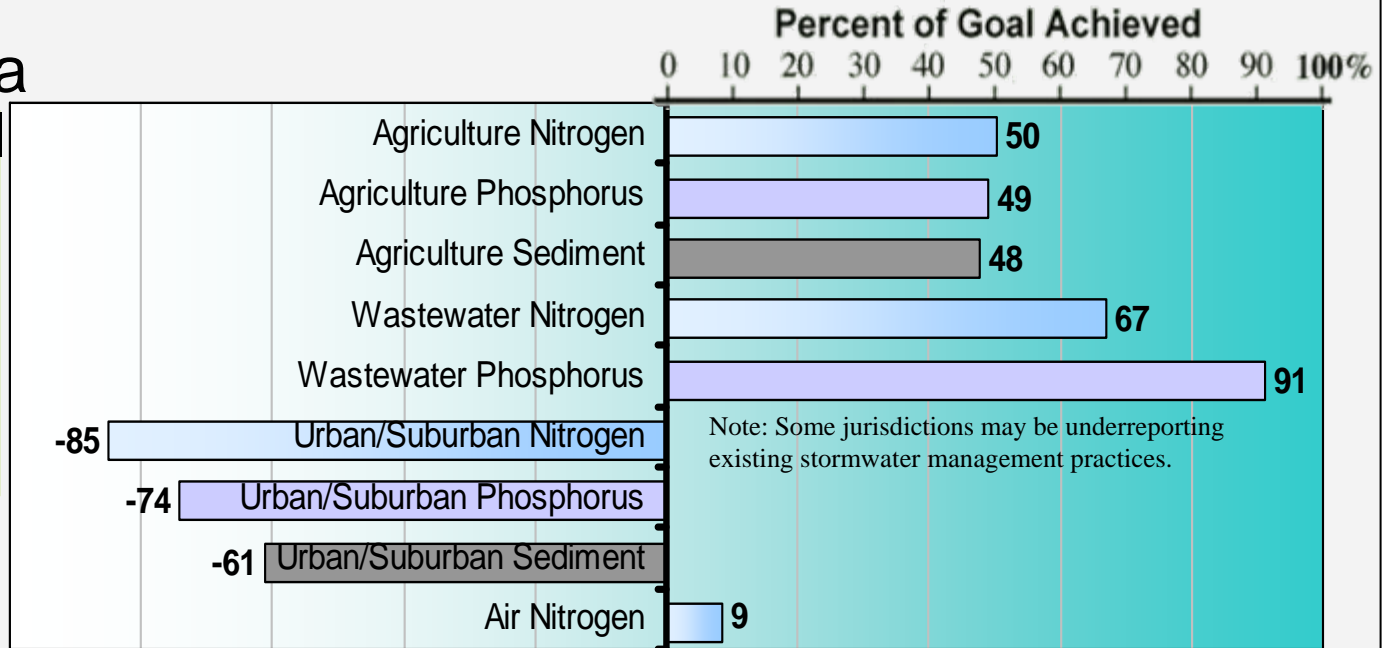
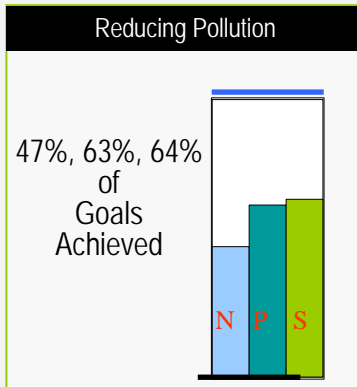
Wastewater loads based on measured discharges; the rest are based on an average-hydrology year. Does not include loads from direct deposition to tidal waters, tidal shoreline erosion or the ocean. Data and Methods: www.chesapeakebay.net/status_reducingpollution.aspx



Chesapeake Bay Health and Restoration Assessment:
Restoration Efforts
03/11/08

What's Being Done? Pollution Reduction

Priority Area



Data and Methods: www.chesapeakebay.net/status_reducingpollution.aspx



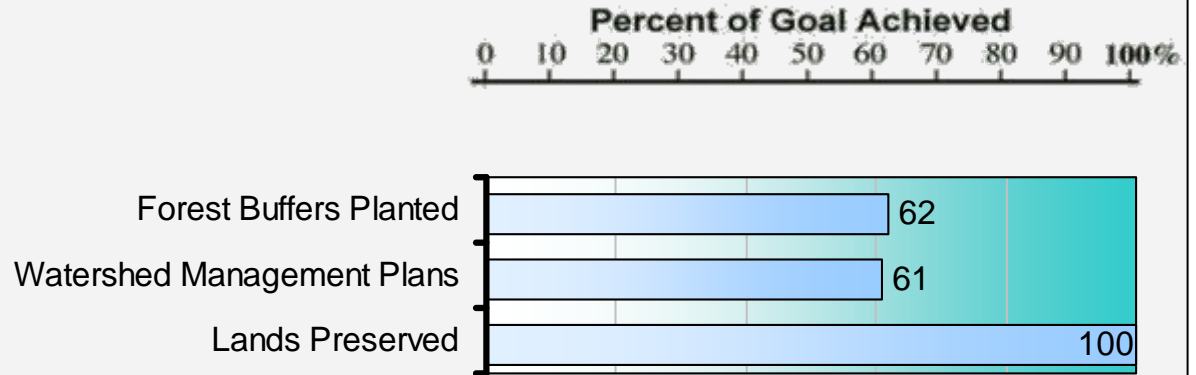
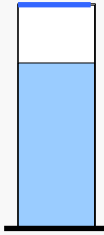
Chesapeake Bay Health & Restoration Assessment:
Executive Summary
03/10/09

What's Being Done: Habitat

Priority Area

Protecting Watersheds

74%
of
Goals
Achieved

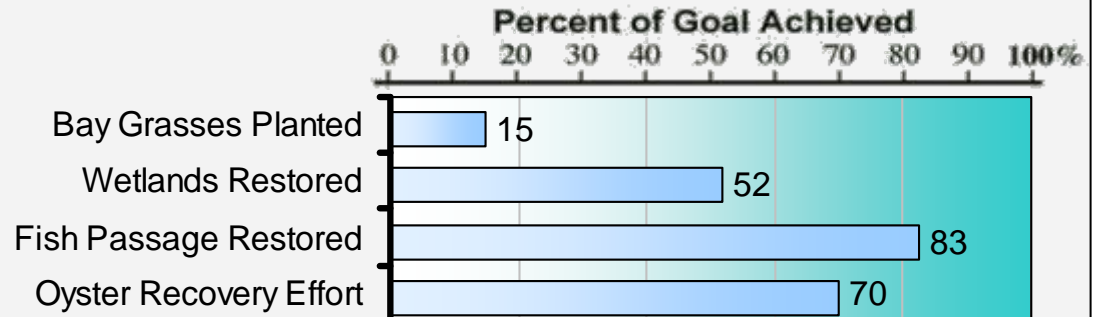
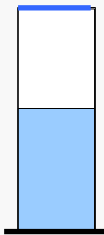


Data and Methods: www.chesapeakebay.net/status_protectingwatersheds.aspx

Priority Area

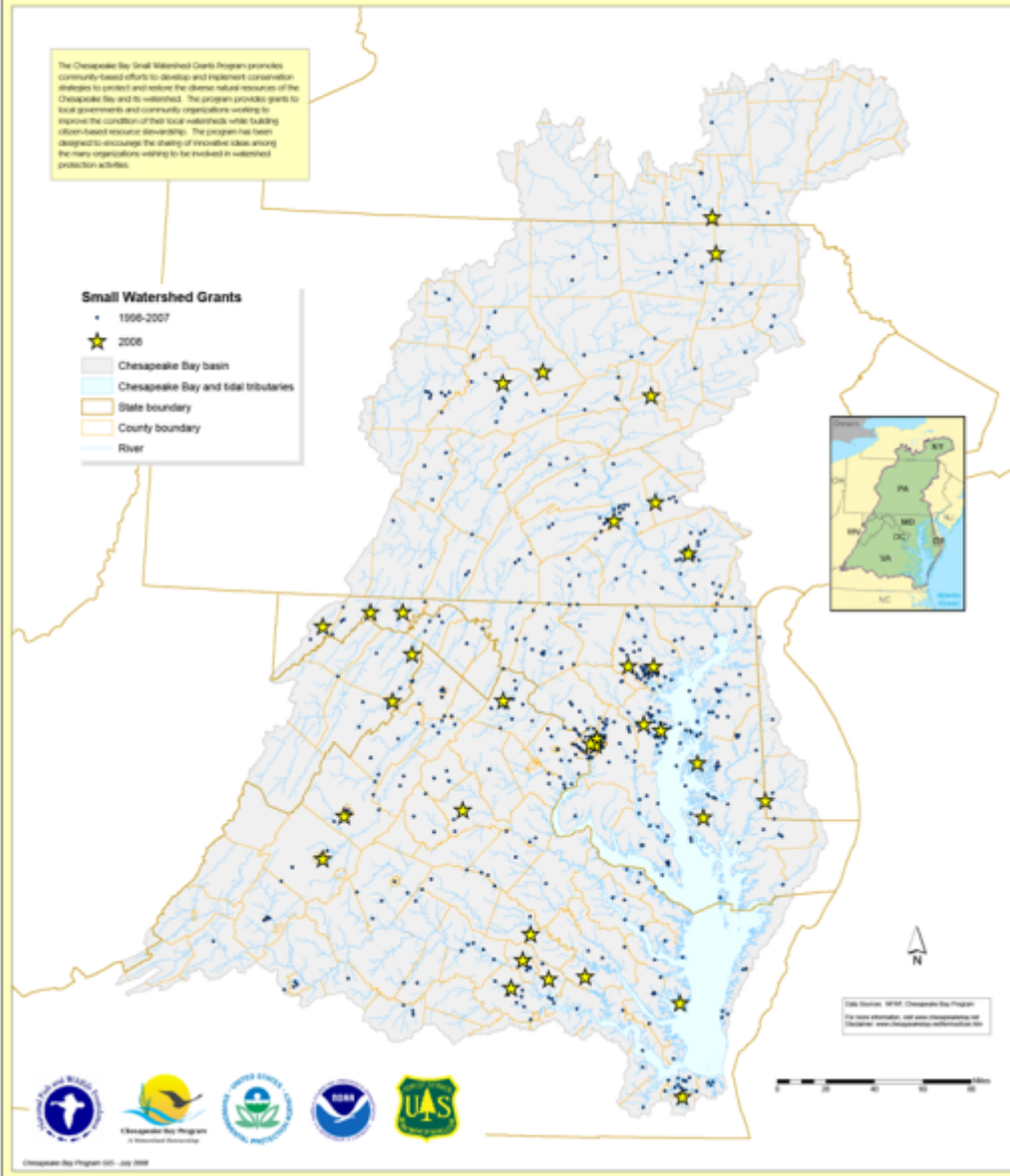
Restoring Habitats

55%
of
Goals
Achieved



Data and Methods: www.chesapeakebay.net/status_restoringhabitats.aspx

Chesapeake Bay Small Watershed Grants - 1999-2008



NFWF's Role 1999-2007

Engage community groups and local governments in watershed stewardship to protect and improve local water quality and vital habitats throughout the Chesapeake Bay watershed.

- **Grant size:**

- ✓ Between \$5,000 and \$50,000 each
- ✓ Up to 5 grants per year of \$100,000

- **Number of grants:**

- ✓ 30-50 grants per year
- ✓ 507 grants total since 1999

- **Funding:**

- ✓ \$2 million to \$3 million per year
- ✓ \$16.9 million from 1999-2006

- **Match leveraged:** Over \$50 million total 1999-2006

- **Demand:**

- ✓ Receive 120-140 proposals requesting total of \$5 million - \$6 million per year



NFWF's Take Home Messages

GHK Consulting INC.
WITH ZOO-LOGIC, LLC

- ✓ Community-based conservation works
- ✓ Social infrastructure needed to sustain investments
- ✓ Social networks needed to grow investments



Rethinking “Chesapeake Bay Stewardship Fund”: It’s Not Just Grants Anymore

- **Provide Financial Assistance**
- **Provide Technical Assistance**
- **Facilitate Information Sharing and Networking**
- **Monitor Project Success and Assess Program Impact**



Our Partners



Program Improvements: Financial Assistance

- Refined Funding Priorities
 - Watershed Restoration
 - Watershed Conservation
 - Watershed Planning
- Restructured Grants
 - Implementation Grants (<\$200,000)
 - Project Planning and Design Grants (>\$30,000)
 - Innovation Grants for Nutrient and Sediment Reduction (\$200k-\$1m)



Our Partners



Program Improvements: Technical Assistance

- Partnership with Chesapeake NEMO:
 - 14 organizations provide technical assistance to grantees on an as-needed basis.
 - Proactively provide assistance in targeted areas to develop new projects or replicate successes.
- NFWF program staff and advisory teams dedicated to success of projects.
- Coordination with Chesapeake Bay Funders Network effort to build organizational capacity.



Helping Your
Community Link Land,
Water & Growth



Program Improvements: Networking and Information Sharing

- Events
 - Annual *Chesapeake Watershed Forum* (10/9 to 10/11/2009)
 - Grantee Roundtables
 - Stormwater Retreat with CSN and ACB
 - Ag Networking Forum with CBFN
 - Site visits
 - Grant announcements
- Tools for Information Sharing
 - Chesapeake Watershed Network:
www.chesapeakenetwork.org
 - CBSF Homepage:
www.nfwf.org/chesapeake
 - NFWF Grants Library



Program Improvements: Monitoring and Assessment

- **Partner with Leaders in the Field**
 - Chesapeake Research Consortium
 - VT Dept. of Biological Systems Engineering
 - Univ. of MD Center for Environmental Science, Ches. Biological Laboratory
- **Develop monitoring and assessment program for**
 - Tracking progress
 - Program improvement
 - Giving feedback to grantees
 - Giving feedback to policy makers and program managers



Monitoring and Assessment Program: Components

- Standardized, peer-reviewed monitoring/assessment protocols for
 - each project type
 - each metric type
- Pre-project site visits (all projects)
- Project completion site visits (all projects)
- Post-project site visits, 3-5 years (sample of projects)
- Seamless data management between NFWF database and Federal/state partners



Monitoring/Assessment Protocols to Be Adopted

	habitat restoration	conservation on forest and farmland	stormwater management	watershed, land use planning	social marketing
site characteristics and location					
implementation against a standard					
environmental results					
cost-effectiveness					
sustainability					
technology transfer					
long term impact, outcomes					
leading indicators of success					



Moving from Evaluation to Change: What Worked for NFWF

- **Coincidental opportunities:**
 - ✓ **NFWF strategic planning, systems changes**
 - ✓ **New Chesapeake funding**
 - ✓ **NFWF staffing changes**
 - ✓ **Chesapeake restoration in the hot seat**
- **Dialogue during evaluation**
- **Recommendations supported by findings (robust data)**

Our Partners



Chesapeake Bay Stewardship Fund

For more information contact:

Amanda Bassow
 Director, Chesapeake Programs
amanda.bassow@nfwf.org

(202) 857-0166
www.nfwf.org/chesapeake/



Our Partners

